

Surface Mount Frequency Mixer

Level 13 (LO Power +13 dBm) 800 to 1000 MHz

ADE-10MH+
ADE-10MH



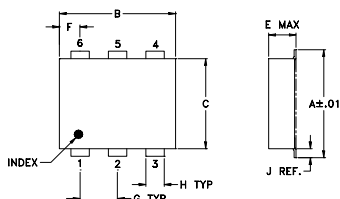
Maximum Ratings

Operating Temperature	-40°C to 85°C
Storage Temperature	-55°C to 100°C
RF Power	200mW
IF Current	40mA

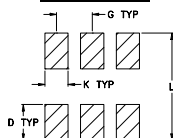
Pin Connections

LO	6
RF	3
IF	2
GROUND	1,4,5

Outline Drawing



PCB Land Pattern



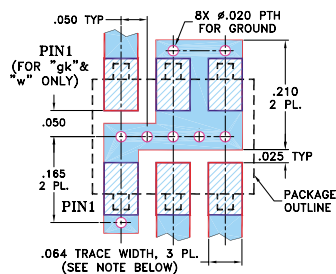
Suggested Layout,
Tolerance to be within ±.002

Outline Dimensions (inch)

A	B	C	D	E	F	G
.272	.310	.220	.100	.162	.055	.100
6.91	7.87	5.59	2.54	4.11	1.40	2.54

H	J	K	L	wt
.030	.026	.065	.300	grams
0.76	0.66	1.65	7.62	0.25

Demo Board MCL P/N: TB-03 Suggested PCB Layout (PL-052)



- NOTES: 1. TRACE WIDTH IS SHOWN FOR ROGERS RO4350B WITH DIELECTRIC THICKNESS .030" ± .002"; COPPER: 1/2 OZ. EACH SIDE. FOR OTHER MATERIALS TRACE WIDTH MAY NEED TO BE MODIFIED.
2. BOTTOM SIDE OF THE PCB IS CONTINUOUS GROUND PLANE.
- DENOTES PCB COPPER LAYOUT WITH SMOBC (SOLDER MASK OVER BARE COPPER)
□ DENOTES COPPER LAND PATTERN FREE OF SOLDER MASK

Features

- low conversion loss, 7.0 dB typ.
- excellent L-R isolation, 34 dB typ.
- excellent L-I isolation, 29 dB typ.
- high IP3, 26 dBm typ.
- aqueous washable
- protected by U.S. Patent 6,133,525

Applications

- GSM

CASE STYLE: CD636

PRICE: \$6.95 ea. QTY (10-49)

**+ RoHS compliant in accordance
with EU Directive (2002/95/EC)**

The +Suffix identifies RoHS Compliance. See our web site
for RoHS Compliance methodologies and qualifications.

Electrical Specifications

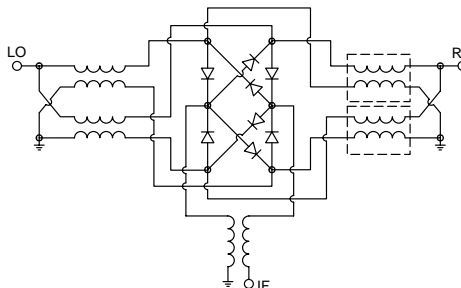
FREQUENCY (MHz)		CONVERSION LOSS (dB)			LO-RF ISOLATION (dB)		LO-IF ISOLATION (dB)		IP3 at center band (dBm)
LO/RF	IF	\bar{X}	σ	Max.	Typ.	Min.	Typ.	Min.	
800-1000	10-200	7.0	0.20	8.5	34	20	29	20	26

1 dB COMP.: +9 dBm typ.

Typical Performance Data

Frequency (MHz)		Conversion Loss (dB)	Isolation L-R (dB)	Isolation L-I (dB)	VSWR RF Port (:1)	VSWR LO Port (:1)
RF	LO	LO +13dBm	LO +13dBm	LO +13dBm	LO +13dBm	LO +13dBm
800.00	830.00	6.96	37.49	27.09	1.66	1.29
810.00	840.00	6.94	37.54	27.08	1.68	1.30
820.00	850.00	6.91	37.55	27.04	1.70	1.31
830.00	860.00	6.91	37.57	27.06	1.71	1.31
840.00	870.00	6.85	37.58	27.07	1.71	1.31
850.00	880.00	6.87	37.54	27.04	1.72	1.31
860.00	890.00	6.90	37.55	27.10	1.71	1.30
880.00	910.00	6.77	37.54	27.17	1.74	1.29
890.00	920.00	6.83	37.52	27.26	1.75	1.29
900.00	930.00	6.95	37.49	27.34	1.76	1.29
910.00	940.00	6.99	37.42	27.37	1.77	1.30
920.00	950.00	6.88	37.30	27.41	1.78	1.30
930.00	960.00	6.78	37.22	27.44	1.77	1.30
940.00	970.00	6.79	37.06	27.45	1.77	1.29
950.00	980.00	6.84	36.95	27.47	1.77	1.29
960.00	990.00	6.87	36.90	27.53	1.79	1.28
970.00	1000.00	6.90	36.76	27.54	1.81	1.28
980.00	1010.00	6.90	36.67	27.61	1.82	1.28
990.00	1020.00	6.87	36.58	27.65	1.82	1.28
1000.00	1030.00	6.80	36.50	27.72	1.82	1.29

Electrical Schematic



Mini-Circuits®

Distribution Centers NORTH AMERICA 800-654-7949 • 417-335-5935 • Fax 417-335-5945 • EUROPE 44-1252-832600 • Fax 44-1252-837010

Mini-Circuits ISO 9001 & ISO 14001 Certified

INTERNET <http://www.minicircuits.com>



REV. B
M98898
ADE-10MH
ED-8276/2
DJ/TD/CP/AM
060613
Page 1 of 2

Performance Charts

ADE-10MH+ ADE-10MH

